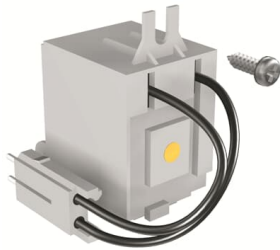




PRODUCT-DETAILS

SOR-C A1-A2 220-240Vac-220-250Vdc

SOR-C A1-A2 220-240Vac-220-250Vdc



General Information

Extended Product Type	SOR-C A1-A2 220-240Vac-220-250Vdc
Product ID	1SDA066137R1
EAN	8015644691325
Catalog Description	SOR-C A1-A2 220-240Vac-220-250Vdc
Long Description	SHUNT OPENING RELEASE WIRED 220...240V AC-220...250V DC A1-A2

Circular Value

Conflict Minerals Reporting Template (CMRT)	9AKK108467A5658
Toxic Substances Control Act - TSCA	9AKK108467A8326

Environmental

Environmental Information	9AKK108467A6707
REACH Declaration	9AKK108466A1425
RoHS Information	9AKK108466A1424

RoHS Status Following EU Directive 2011/65/EU and Amendment 2015/863 July 22, 2019

Ordering

Order Code US and Canada	KA2S2
EAN	8015644691325
Minimum Order Quantity	1 piece
Customs Tariff Number	85389099

Dimensions

Product Net Weight	0.109 kg
--------------------	----------

Container Information

Package Level 1 Units	1 piece
Package Level 1 Width	28.6 mm
Package Level 1 Height	136 mm
Package Level 1 Depth / Length	107 mm
Package Level 1 Gross Weight	0.115 kg
Package Level 1 EAN	8015644691325

Additional Information

Configuration Type	Loose or configurable
Current Type	AC/DC
Product Main Type	Accessories for FORMULA
Product Name	Accessory
Product Type	ACC
Rated Voltage (U _r)	220 ... 240 V AC 220 ... 250 V DC
Standards	IEC
Suitable For	A1, A2

Certificates and Declarations

Data Sheet, Technical Information	9AKK105713A5945
Declaration of Conformity - CE	Refer to the EU Declaration of the relative Circuit Breaker
Instructions and Manuals	1SDC210032D0204

Classifications

ETIM 7	EC002483 - Switch spool for power circuit breaker
ETIM 8	EC002483 - Switch spool for power circuit breaker
ETIM 9	EC002483 - Switch spool for power circuit breaker
Object Classification Code	Q
WEEE Category	5. Small Equipment (No External Dimension More Than 50 cm)
eClass	V11.1 : 27370421

Categories

Low Voltage Products and Systems → Circuit Breakers → Moulded Case Circuit Breakers → Accessories for Formula DSA

